

EASY-CHANGE INSTALLATION INSTRUCTIONS

For Deluxe Hardware Kit by CDC

Please read all instructions before beginning.

For proper installation of Wood Storm/Screen Doors, we recommend using the "DELUXE HARDWARE KIT" offered by The Combination Door Company. The kit includes everything you need for quick, correct installation of your new door including lockset, hinges, heavy-duty door closer, and safety chain.

Trim top of door to match the top of your entryway with a fine tooth circular saw.

1. Place door in entryway with the Easy-Change locking device to the inside of opening. Allow an 1/8" gap around the top and sides of the door and a 3/16" gap at the bottom. A plane may be used to take a small amount of wood off the sides of the door. A circular saw should be used to trim the bottom and large amounts off the sides of the door.
2. Once the door is fitted, place a shim under the door to give an 1/8" reveal on the top and sides.

4. INSTALLING HINGES:

The hinges may be surface-mounted, mortised, or half-mortised.

SURFACE MOUNTING: The hinges will be mounted flat with the screws entering from the outside of the door and jamb. Place one hinge 6" from the top and one hinge 6" from the bottom of the door. Make sure that you have an 1/8" gap between the door and the jamb. Mark the holes and drill 1/8" holes, being careful not to drill through the door. Screw the two hinges on. Center the other hinge between the top and bottom hinges. Repeat installation for center hinge.

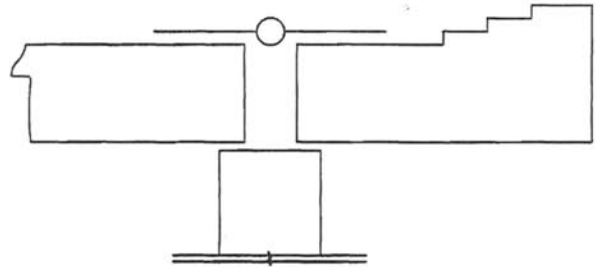
MORTISED: The hinges will be mounted on the edge of the door and the edge of the jamb. Start by marking the top and bottom hinges 6" from each end. Take door off and set it on its side. Place a hinge at each location on the edge of the door and trace. With a wood chisel, tap around the tracing to a depth equal to the thickness of the hinge. Next, chisel out the area where the hinge will be, making sure not to go deeper than the thickness of the hinge. Place the hinge on to fit snugly. Install hinge. Repeat for remaining hinges. After the remaining hinges have been installed on the door, place the door in the opening and mark the top and bottom of each hinge. Remove pins from the hinges and trace the hinges in the opening. Repeat the procedure for chiseling on the jamb as you did on the door. Install hinges. Place the door in opening and replace the pins.

HALF-MORTISED: Use procedures from surface mounted and mortised. Pull hinge pin and reverse one leaf. Surface mount can be on either the door or the exterior trim.

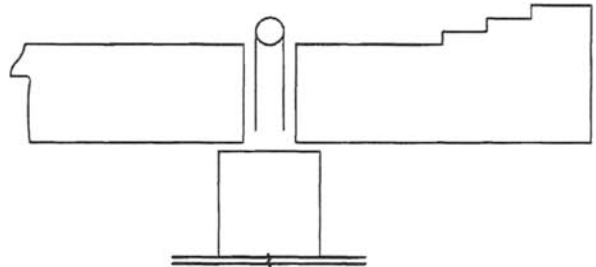
5. Remove the door from hinges and properly finish the door. See "Finishing Requirements" on reverse side of page.
6. Install the lockset according to the manufacturer's instructions. Place it approximately 36" from the bottom of the door, making sure that it doesn't interfere with the operation of your entrance door lockset.
7. For Ultra-Vu and styles #11 and #50, install the door closer on the bottom portion of the door. Locate it as high on the bottom rail as possible. For all other door styles, center the closer on the lock rail below the inserts. Manufacturer's installation instructions are included.
8. Install the chain guard protector near the top of the door according to manufacturer's instructions.

TOOLS REQUIRED:

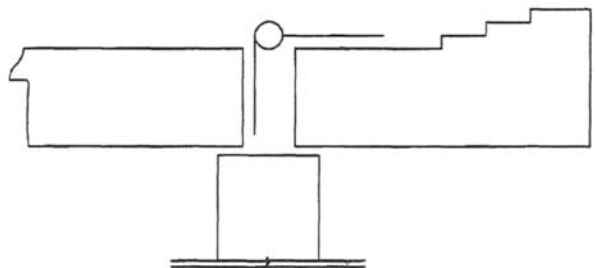
Phillips Screwdriver, Slot Screwdriver, Wood Chisel, Drill and Bits, Hammer, Fine Tooth Circular Saw, and Plane.



Surface Mounted Hinge



Mortised Hinge



Half Mortised Hinge

The Combination Door Company

1000 Morris Street * P. O. Box 1076

Fond du Lac, WI 54936-1076

www.combinationdoor.com