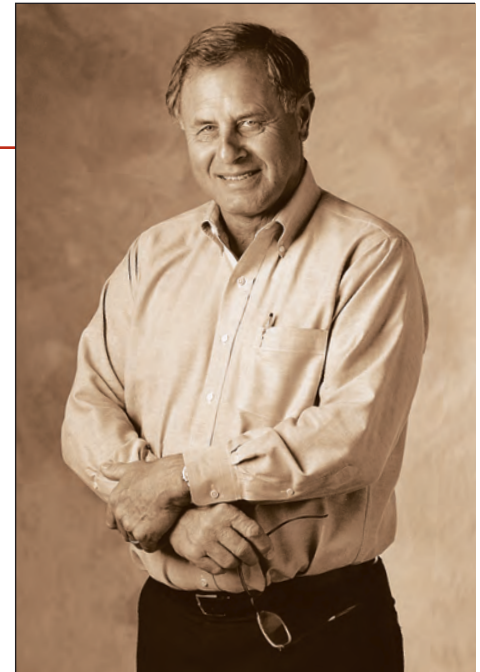




Dave Schmidt, Chairman of the Board  
Great Grandson of L.C. Schmidt  
*On History*

*My Great Grandfather Founded The Combination Door Company In 1912. And ever since, it's been a family tradition to work here. My grandfather worked at CDC until he was 80 years old, and my father was 72 when he retired. My son, Dan, will continue the tradition. So will his sons.*

*I have been involved in operations since I was 16, and after 45 years, I've seen many changes in the wood door business. Our company has put the best concepts to work as well as input from our people, suppliers and customers. These joint efforts, along with our innovation, have helped us create these quality products in the 85 year Schmidt tradition. And this tradition will continue with our new L.C. Schmidt Signature Door Series.*



Hem Fir



Walnut



Mahogany



Walnut CDC-104



Mahogany CDC-109

Circle-Top Poplar  
CDC-108CT Double Door

Shown on Front Cover:  
Circle Top Poplar  
CDC-108CT Door

Note: Circle Top / Arch Top  
doors are available in all  
door designs.





Dan Schmidt, President and CEO  
Great Great Grandson of L.C. Schmidt  
*On Capabilities*

Combination Door Is Different Than Other Companies. CDC makes some of the finest doors in the world, and we pay the same attention to detail that small handcrafters do. But we also offer the short lead times, consistency and advanced technology of a larger company. Our doors are manufactured in many wood species, in a multitude of sizes, and we cover orders from one door to 5000. Our skilled workers and 90,000 square feet of efficient manufacturing space produce top quality door products for customers more quickly to meet today's demands. There are a lot of differences between CDC and other companies. I feel the biggest one is our workers are proud of what they do. That makes all the difference.



Ash



White Oak



Cherry

Hickory CDC-106  
Inverted



Red Oak CDC-730  
Full Louver Bi-fold



Douglas Fir CDC-22

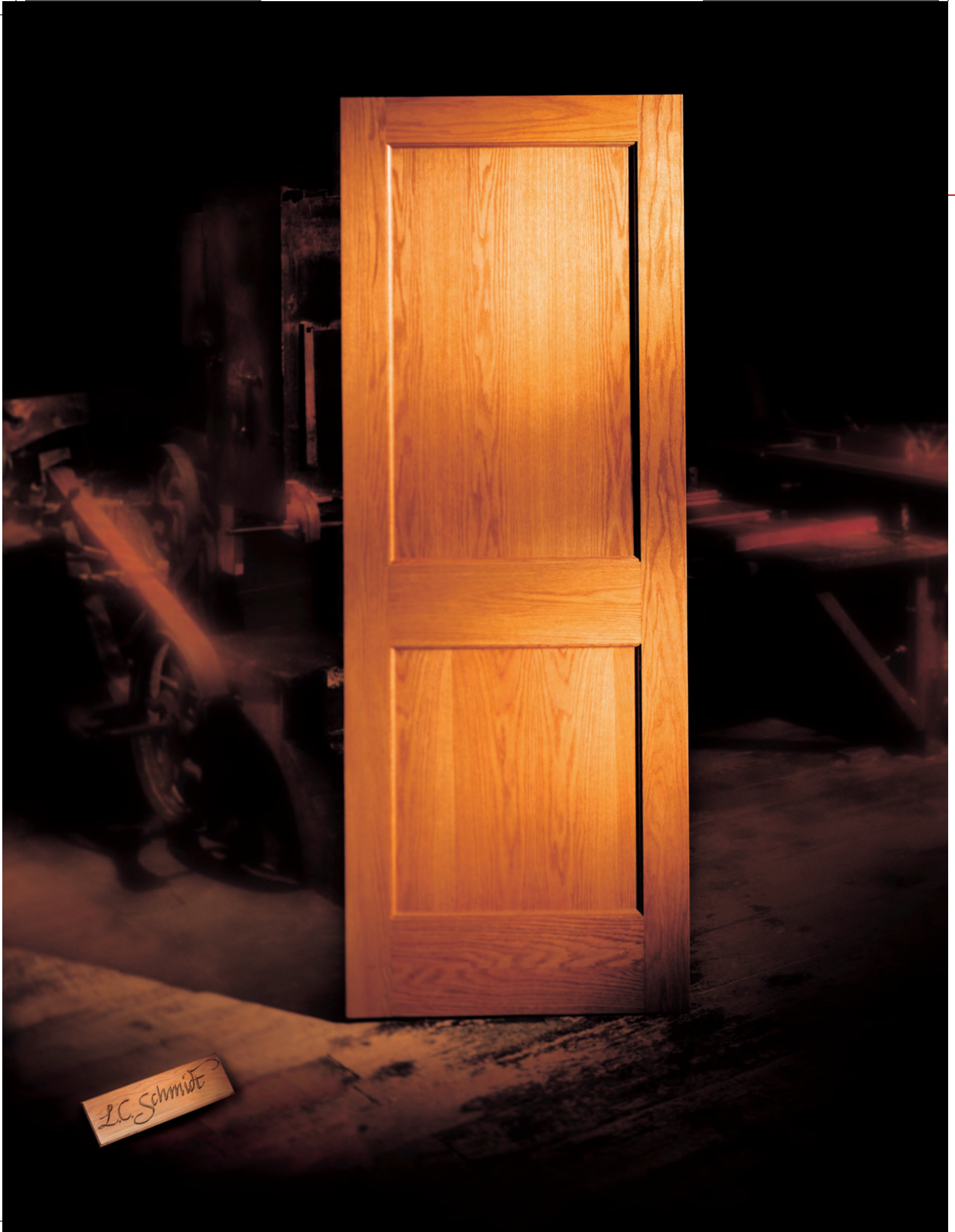
White Oak CDC-103 (background)  
Pecan CDC-106 Inverted (foreground)













Mark Tautges, Vice President of Manufacturing  
Company Employee Since 1972  
*On Technology*

At CDC New Technology Is One Of The Tools We Use To Increase The High Quality Of Our Doors. *Manufacturers often sacrifice quality for quantity, so it's my job to make sure any new equipment we use will not only increase efficiency, but will also improve the quality of our doors. And it has. Even though we've been doing some things the same way for years, it's much easier for us today to manufacture more doors, more accurately, than it was ten years ago. Improvements in tooling help us do it more consistently – regardless of order size, door design, or wood species. I have no desire to compete with big manufacturers – we don't need to make a million doors to know that we're doing things right.*



Hickory



Red Oak



Birch



Pine CDC-106  
Flat Panel  
Shaker Style



Pine CDC-100  
Flat Panel

Red Oak CDC-106  
Bi-fold

Red Oak CDC-102 Flat Panel





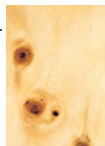
Becky Fink, Machinist  
Company Employee Since 1983  
*On Craftsmanship*

As A Machinist, I Make Parts For Doors Out Of A Variety Of Woods. *Each wood species has its own characteristics, and some are not easy to machine. I run these woods on a moulder. This machine cuts the various profile designs for the L.C. Schmidt Signature Door Series.*

*The moulder is very precise—with a tolerance of 10/1000 of an inch. You can barely see 10/1000 of an inch! Here at CDC, people have worked for years to achieve that kind of precision. I never imagined any company would put so much time into perfecting their product before I worked here. But since then, I've discovered that craftsmanship isn't something you master, it's something that you're always striving to learn.*



Poplar



Knotty Pine



Maple



Poplar CDC-107

Ash CDC-108

Pine CDC-732  
Half Louver

Birch CDC-106







*Various Panel Options*



*3/4" Double Hip*



*1" Concave Raised*



*Flat Panel*





*Various Glass Options*



L.C. Schmidt